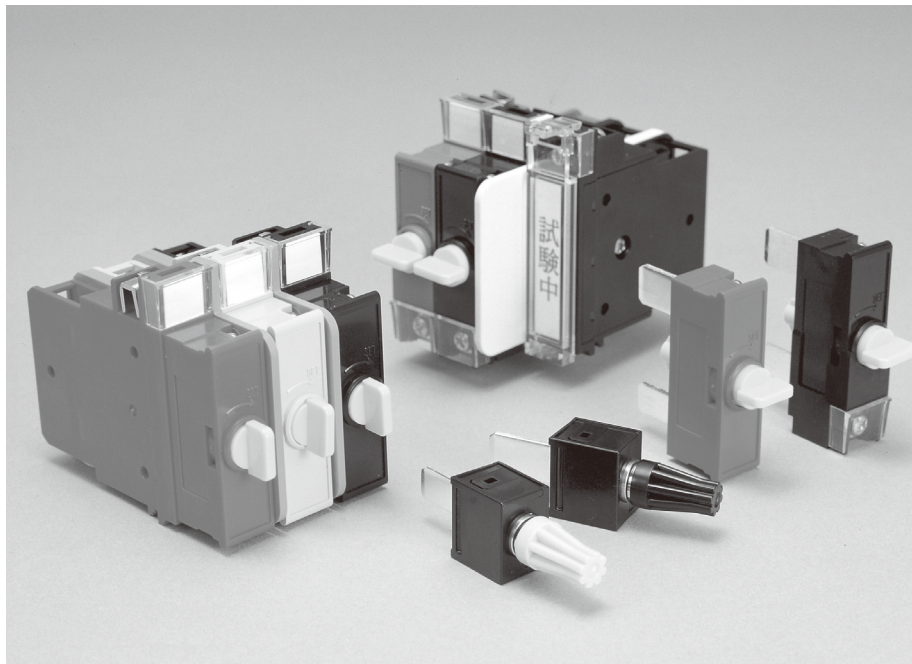


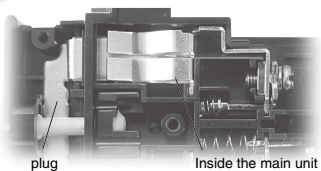


V-TYPE

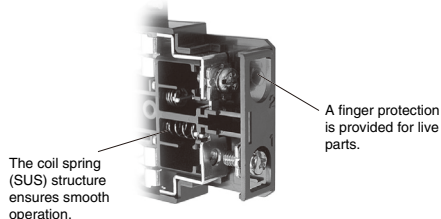


FEATURES

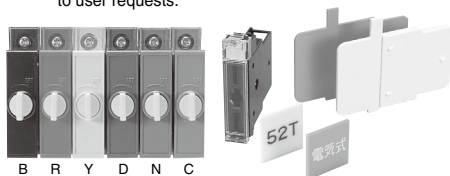
- 1** The test plug and lock plug connecting parts provide a **twin-contact** structure that enables secure connections.



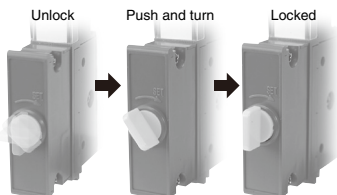
- 2** With the **up-screw type terminals**, the V type can prevent terminal screws from dropping, resulting in a reduced number of wiring steps. The **finger protection structure** protects the live parts, ensuring improved safety.



- 3** The V type terminals provide **color variations** depending on the application. A variety of protective caps and application labels are also available. These parts can be combined according to user requests.



- 4** The **one-touch lock mechanism** securely locks each terminal. You can lock and unlock a terminal by pushing and turning the knob (two actions), to prevent erroneous operation.



SPECIFICATION (RATINGS AND PERFORMANCE)

Specification	Type	VTT · VTL
Rated insulation voltage (U _i)		250V AC / DC
Rated current-carrying capacity (I _{th})		20A
Max. wire size		5.5mm ²
Screw size		M4 x 9 (Up-screw type)
Withstand voltage	Between live parts and mounting panel Between live parts	2,000 V AC for one minute
Lighting impulse	Between live parts and mounting panel Between live parts	±7,000 V, 3 times for each pole (1.2 / 50 µs)
Insulation resistance	Between live parts and mounting panel Between live parts	1,000 MΩ or more (by insulation resistance meter, 1000 V DC)
Overload resistance		800 A for 2 seconds (Twice at one-minute intervals)
Contact resistance (Initial value)		10 mΩ max.
Insertion / removal durability		3,000 operations or more
Operating temperature		-20 to 50°C
Storing temperature		-40 to 85°C
Altitude		2,000 m max.

HOW TO ORDER

Ordering a single product

[Voltage test terminal]

VTT-1A-B

Basic type

Test terminal

No. of poles

Color

Code	Separator
A	None
B	Provided (right side)

Code	Munsell color
B	N1.5
N	7.5BG4/1.5

[Trip lock terminal]

VTL-1A-B

Basic type

Trip lock

No. of poles

Color

Code	Separator
A	None
B	Provided (right side)

Code	Munsell color	Color
B	N1.5	Black
R	7.5R4.5/14	Red
Y	5Y8/12	Yellow
D	7.5BG3/3.5	Blue green
N	7.5BG4/1.5	Gray
C	2.5YR5/6	Brown

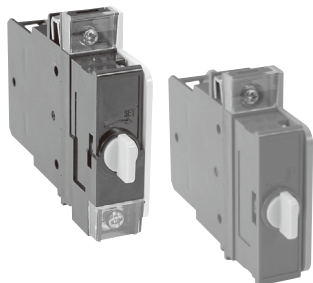


V-TYPE

HOW TO ORDER

Ordering products in combination

Ex. 1 Combination of a terminal and a separator



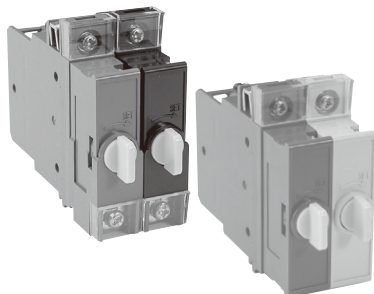
[Voltage test terminal]

Type code **VTT-1 B-B**
with separator Color
No. of poles

[Trip lock terminal]

Type code **VTL-1 B-R**
with separator Color
No. of poles

Ex. 2 Combination of two terminals



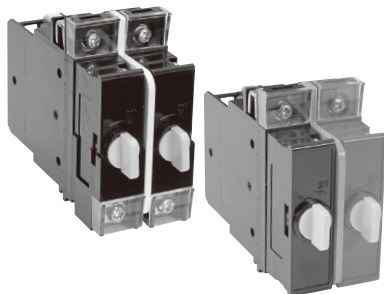
[Voltage test terminal]

Type code **VTT-2 A-NB**
no separator Color
No. of poles (Front view, from the left side)

[Trip lock terminal]

Type code **VTL-2 A-RY**
no separator Color
No. of poles (Front view, from the left side)

Ex. 3 Combination of two terminals and one separator



[Voltage test terminal]

Type code **VTT-1B1A-BB**
Combination type Color
(Front view, from the left side)

[Trip lock terminal]

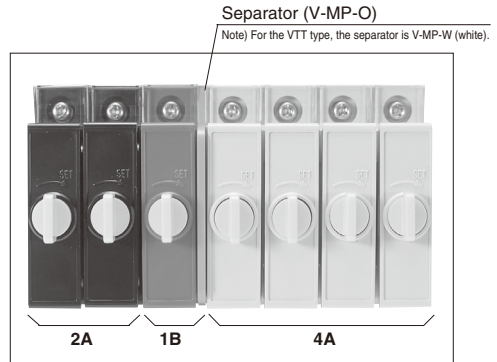
Type code **VTL-1B1A-BR**
Combination type Color
(Front view, from the left side)

■ Combination type list

Code No. of poles	□ A (No separator)	□ B (With separator on the right side)	□ B □ A (With separator between terminals)
1 pole	1A 	1B 	
2 poles	2A 	2B 	1B1A
3 poles	3A 	3B 	2B1A
4 poles	4A 	4B 	3B1A
5 poles	5A 	5B 	4B1A
6 poles	6A 	6B 	5B1A
7 poles	7A 	7B 	6B1A

■ Type code for combination orders other than those listed on the left

Ex. 4 Combination of seven terminals and one separator



[Trip lock terminal]

Type name **VTL-2A1B4A-BBRYYYY**

Combination type Color
(Front view, from the left side)

Request for combination orders

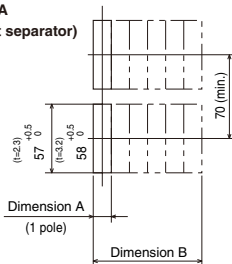
- The VTT and VTL terminals can be combined. However, to order this combination, issue orders for individual types.
- Eight or more poles can be combined. However, to order multiple terminals, divide your order by the number of poles within seven poles.
- For the combination dimensions of the A and B types, contact Fuji Electric Industry.

MOUNTING PANEL CUTOUT DIMENSIONS

■ A mounting panel with a thickness of 2.3 mm or 3.2 mm can be applied.

● Type A

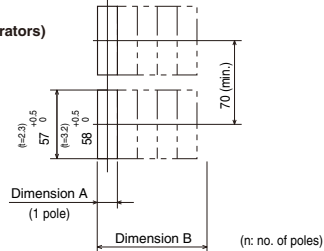
(without separator)



Dimension A (for only one pole) $13.5^{+0.5}_0$
 Dimension B (for multiple poles) $13.2+15.2(n-1)^{+0.5}_0$

● Type B

(with separators)



Dimension A (for only one pole) $15.5^{+0.5}_0$
 Dimension B (for multiple poles) $13.2+15.2(n-1)^{+0.5}_0 + \text{No. of separators}$

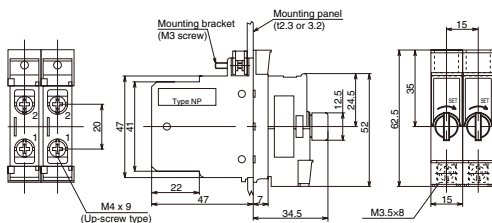
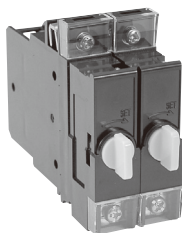
* The separator width is 2 mm each.



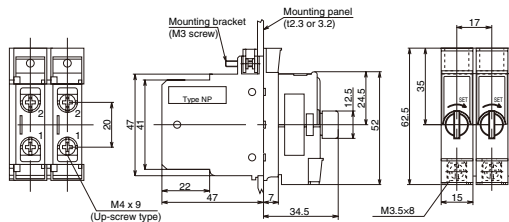
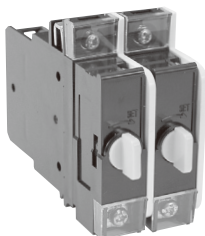
V-TYPE

STANDARD PRODUCTS

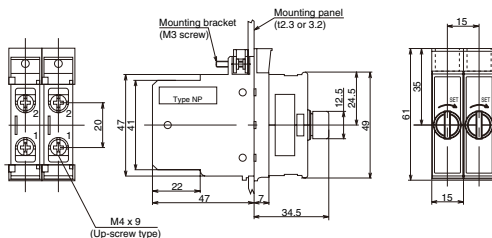
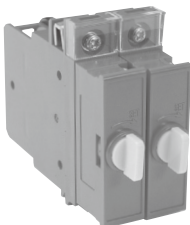
VTT- Number of poles **A-** Color



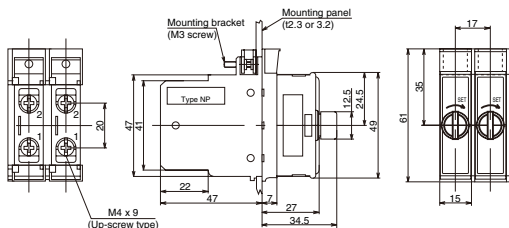
VTT- Number of poles **B-** Color



VTL- Number of poles **A-** Color



VTL- Number of poles **B-** Color

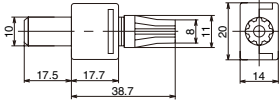


ACCESSORIES

Test terminal

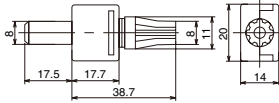
● **VTT-X-B**

Code	Munsell color	Knob color
B	N1.5	Black
Y	5Y8/12	Yellow



● **VTT-Y-B**

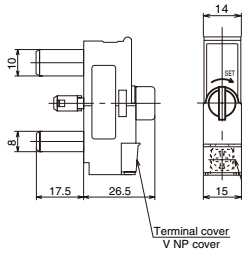
Code	Munsell color	Knob color
B	N1.5	Black
Y	5Y8/12	Yellow



Plug for VTT

● **VTT-P-B**

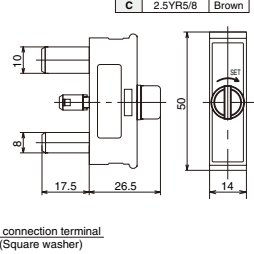
Code	Munsell color	Body color
B	N1.5	Black
N	7.5BG4/1.5	Gray



Plug for VTL

● **VTL-P-B**

Code	Munsell color	Body color
B	N1.5	Black
R	7.5R4.5/14	Red
Y	5Y8/12	Yellow
D	7.5BG3/3.5	Blue green
N	7.5BG4/1.5	Gray
C	2.5YR5/8	Brown



Protective cap

● **V-CAP-00**

Code	Base color	Character color	Indicated character
00	Transparent	—	—
01	White	Red	LOCKED
02	White	Orange	LOCKED
03	White	Red	UNDER TESTING
04	White	Orange	UNDER TESTING
05	White	Red	NOT USED
06	White	Orange	NOT USED
07	White	Orange	NOT USED



Nameplate

● **V-NP-0**

Code	Base color	Character color	Character
W	White	White	
R	Red	Red	
D	Blue green	Blue green	
S	Blue	Blue	
G	Green	Green	
Y	Yellow	Yellow	
N	Gray	Gray	
B	Black	Black	

Code	Character	Code	Character	Code	Character
000	—	021	BK	200	85F
001	P	022	DVG	201	52T
002	N	023	+	202	52a
003	T	024	—	203	52TX
004	S			204	52TP
005	R			205	52TSA
006	OC			206	52TSB
007	DG			207	52TSC
008	CB			208	52TF
009	UV			209	52SR
010	OV			210	85S
011	Pr			211	52TT
012	B			212	52TSC
013	W			213	52C
014	BWR			214	52AX
015	HOC/OC				
016	OCG				
017	OVG-T				
018	SCP _r				
019	K				
020	C				

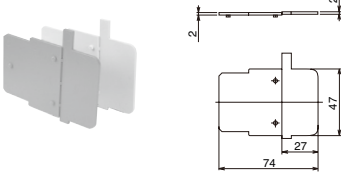
* Code "000" indicates no character (blank nameplate).

Separator

● **V-SP-0**

Code	Munsell color	Remarks
O	2.5YR6/12	Orange
W	—	White

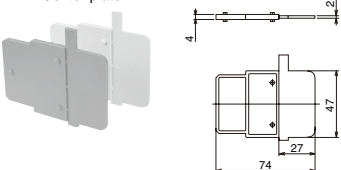
Right end plate



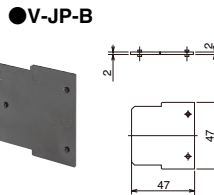
● **V-MP-0**

Code	Munsell color	Remarks
O	2.5YR6/12	Orange
W	—	White

Center plate



Joint plate



NP cover, Terminal cover

